

MEASURE Evaluation



Community- Based Information Systems

Jim Thomas, PhD, Director

May 2016

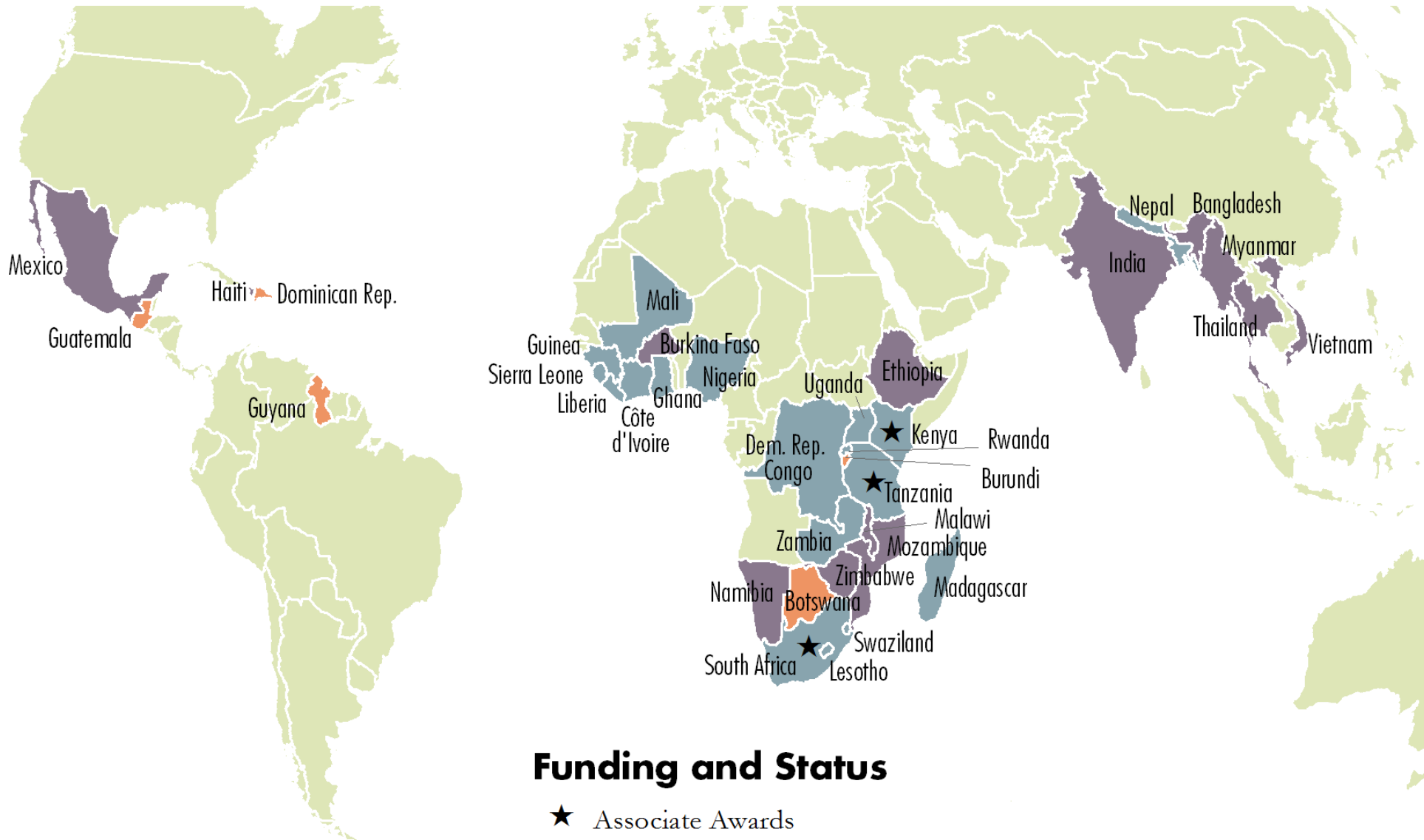
Photo credit: Jane Silcock / USAID



MEASURE Evaluation: Results framework

1. **Strengthened** collection, analysis, and use of **routine health data**
2. Improved country capacity to **manage health information systems**, resources, and staff
3. **Methods, tools, and approaches** improved and applied to address health information challenges and gaps
4. Increased capacity for **rigorous evaluation**

Where MEASURE Evaluation is



Funding and Status

★ Associate Awards

Core-funded

Field-funded

Core and Field-funded

MEASURE Evaluation:

Health areas

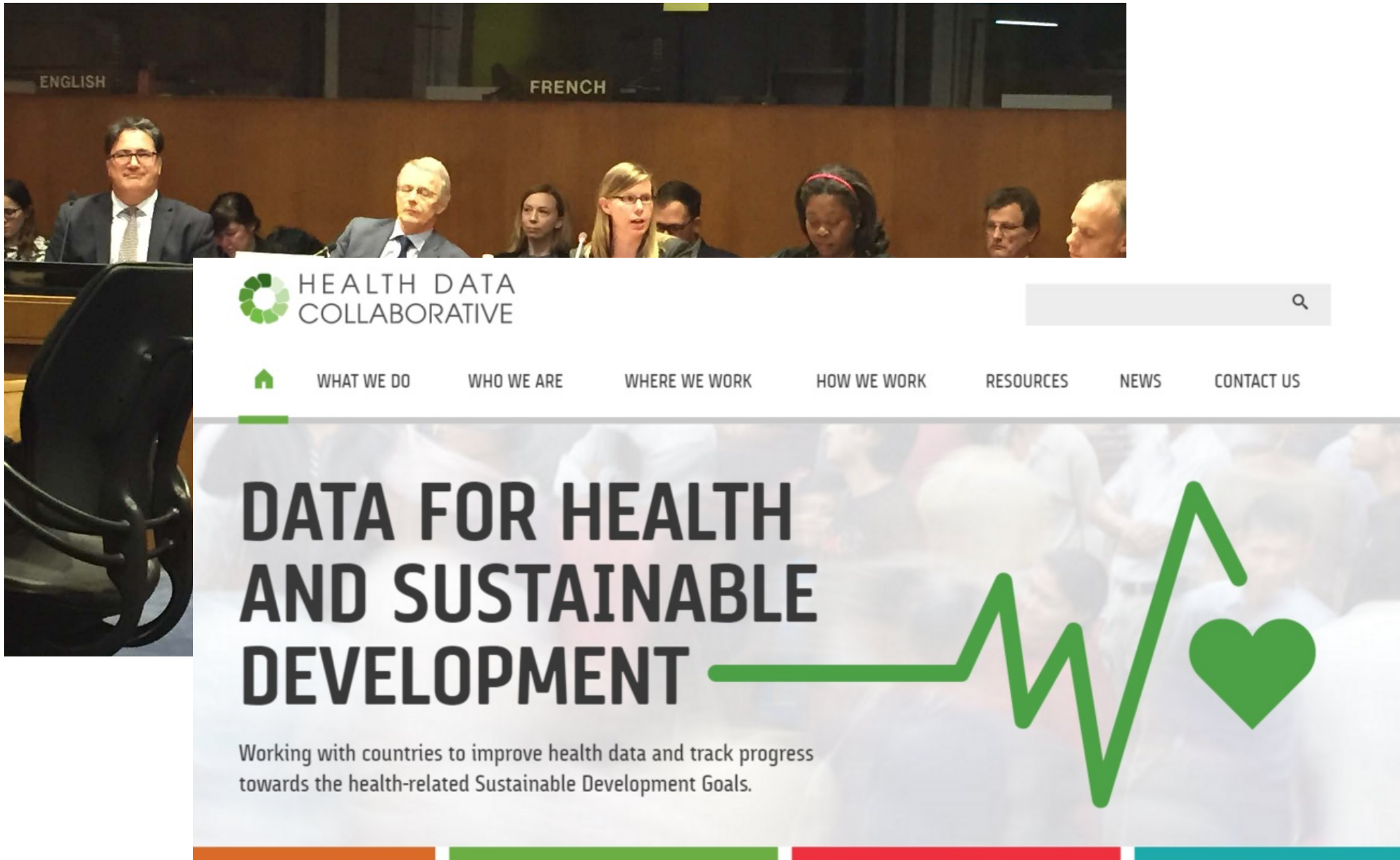
- HIV/AIDS
- Malaria
- Tuberculosis
- Nutrition and food security
- Reproductive health
- Ebola
- Zika?

MEASURE Evaluation:

Areas of expertise

- HIS management
- Systems thinking
- Gender equity
- Data quality
- Data analysis
- Geographic analysis
- Data visualization
- Informatics
- Data ethics
- Community-based information systems
- OVC
- Key populations
- Costing
- Capacity building
- Knowledge management

MEASURE and the SDGs



ENGLISH FRENCH

HEALTH DATA COLLABORATIVE

WHAT WE DO WHO WE ARE WHERE WE WORK HOW WE WORK RESOURCES NEWS CONTACT US

DATA FOR HEALTH AND SUSTAINABLE DEVELOPMENT

Working with countries to improve health data and track progress towards the health-related Sustainable Development Goals.

Inter-country Conference on Measurement and Accountability



SDG considerations

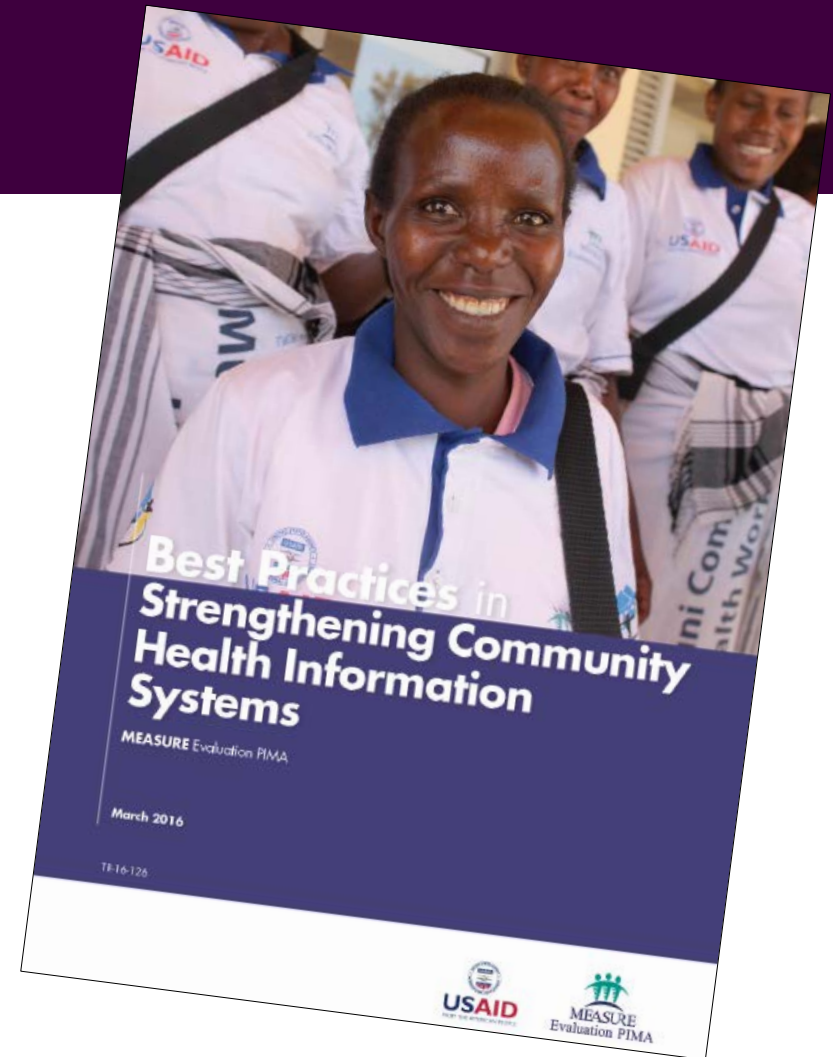
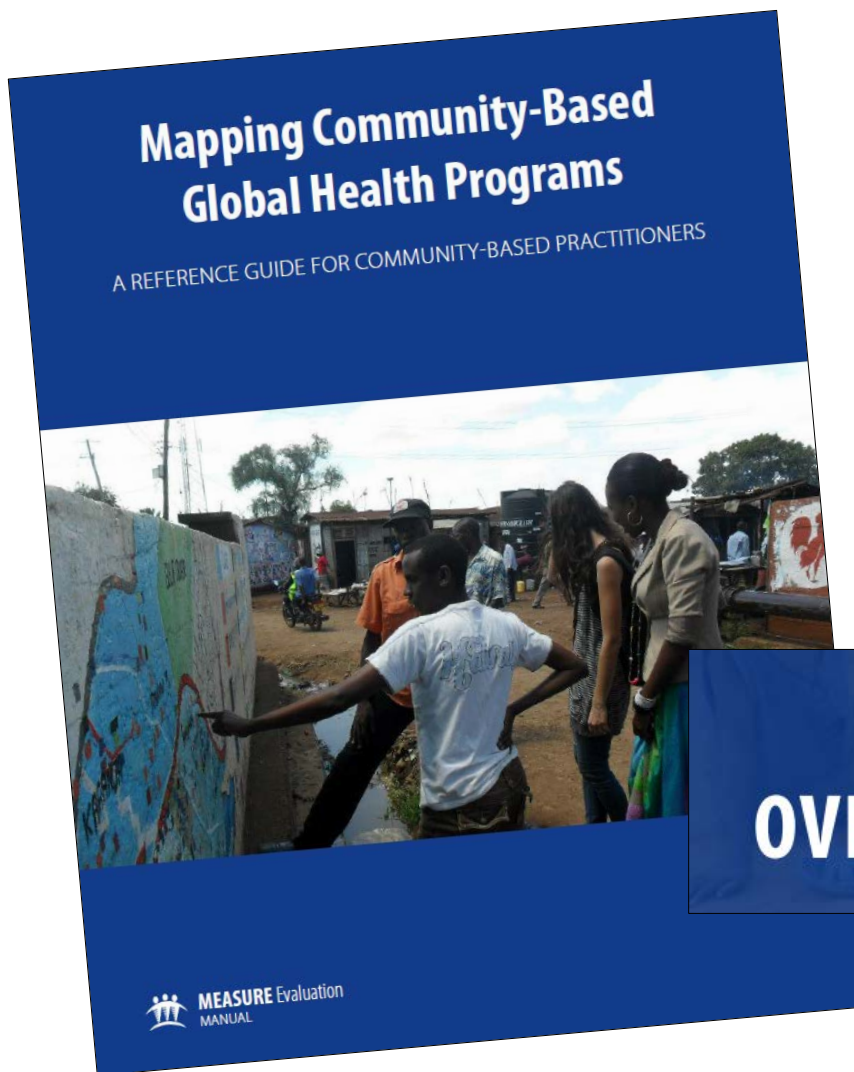
- Balancing global and local agendas
- Not all answers are electronic
- The tax on care providers
- Evidence on how to improve evidence

Recommendations

- Incorporate local voices
- Pay as much attention to the human factors as to the IT factors
- Use or collect evidence on how to effectively build data systems

Questions?

For more information
visit the website!



OVERVIEW

Case Study Series
Community-Based Information Systems

MEASURE Evaluation is funded by the U.S. Agency for International Development (USAID) under terms of Cooperative Agreement AID-OAA-L-14-00004 and implemented by the Carolina Population Center, University of North Carolina at Chapel Hill in partnership with ICF International, John Snow, Inc., Management Sciences for Health, Palladium, and Tulane University. The views expressed in this presentation do not necessarily reflect the views of USAID or the United States government.

www.measureevaluation.org

